

# Web Enterprise suite

Incident-Event Manager (IM)



## Incident & Event Management Solutions

The Web Enterprise Suite Component for Emergency Management



# COMPUSULT

Delivering Innovation

Mitigation

Response

Recovery



# Comprehensive Incident-Event Management

## The Web Enterprise Suite Incident-Event Manager (IM)

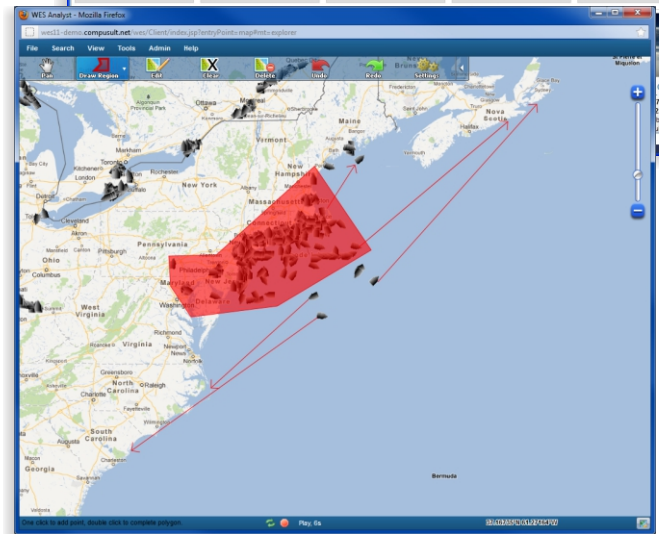
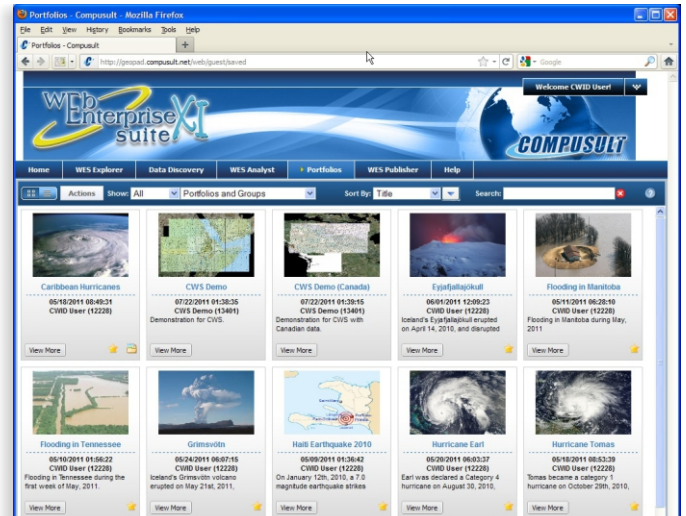
Having the right information, at the right time, is vital for all areas of incident-event management and emergency response. Emergency response personnel need reliable access to multiple sources of information, and Compusult's **Web Enterprise Suite (WES)** and its **Incident-Event Manager (IM)** component provide the necessary platform for users to proactively plan, prepare and respond to natural and man-made disasters.

## Emergency Preparedness Managing Data and Situational Awareness

Effective planning for potential emergencies is essential for officials. Preparing for disasters is a cycle, and involves continuously managing resources, training staff, evaluating processes and improving activities to ensure best practices are being followed.

As an example, **WES** allows emergency personnel to better respond to flooding in a city by pooling together all forms of geospatial data and using it for situational awareness. The **IM** is valuable as it offers organizations the ability to manage, share and collaborate on information across the enterprise or in the field. It opens the information flow and manages data that has been discovered and is relevant to the organization and the area affected.

The **IM**, in combination with other components of **WES** such as **WES Analyst** and **GO Mobile**, supports the planning for events by allowing users to create situational views with all available data. Information such as weather patterns and infrastructure can be overlaid on the included map viewer, **WES Analyst**, or a third party map viewer to determine hazards, outcomes, and strategies.





# The Complete, End-To-End Solution

## Emergency Mitigation

### Discovery, Access and Analysis of Disparate Data

Understanding your surroundings and being aware of all possible effects of a natural disaster ensure organizations can better respond at a moments notice. **WES** offers the ability to better plan and coordinate before a disaster occurs.

Mitigating against disasters entails a great deal of planning and analysis on behalf of emergency officials. Lessening the impact of a wildfire can involve reducing the loss of life, property, wildlife and resources in a particular area of interest. Using **WES**, officials can effectively plan strategies, evacuation measures and regulations in an effort to decrease the amount of devastation.

Users can discover and manage vast amounts of data, and use it strategically to focus on long term efforts of reducing risk. By using the **WES Analyst** component of the suite, officials can visually fuse disparate geospatial information to analyze potential disasters and their impacts.



## Emergency Response

### Accessing Data in the Field

While it is necessary to access data for planning and preparing for natural disasters, it is also vital to have the right information in the field at the time of the emergency to efficiently allocate resources. Emergency Response requires the mobilization of emergency services and personnel, but it also entails the sharing of information between personnel in the field back to the command centre.

If a hurricane strikes a community, emergency personnel need access to geospatial data to make effective decisions. It is also necessary to have systems in place to share findings and information with other personnel on the scene, as well as back at headquarters. With **GO Mobile**, firefighters, police and other first responders can capture significant data and share it for decision making purposes, even in **disconnected environments**. By using **GO Mobile** in the field, users can:

- Capture and store information such as videos, pictures, documents and text
- Work in **disconnected** communications environments
- Broadcast messages to other **GO Mobile** users
- Track and locate like-authorities
- Search, manage and discover geospatial data from disparate sources
- Gather situational intelligence in real-time

This mobile app for iOS and Android devices enhances situational awareness by accessing data, sharing rapidly changing information and alerts in a real-time environment.

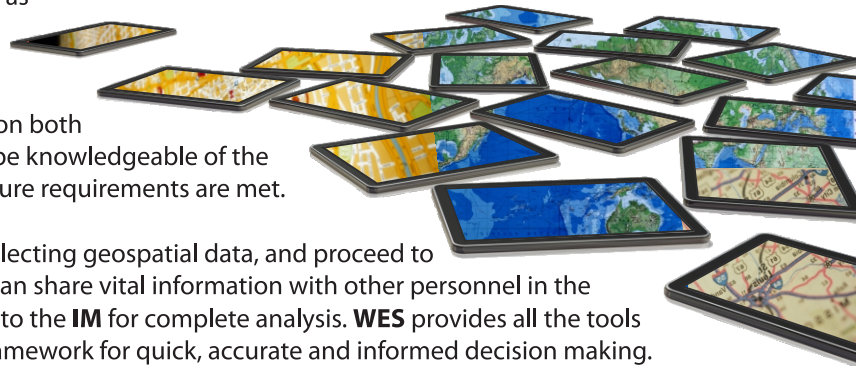


# Multi-Platform Solution

## Emergency Recovery

### Sharing Data for Informed Decision Making

An earthquake can have devastating impacts on an area such as destroyed property, homelessness and loss of life. Once response efforts to deal with immediate needs are dealt with, recovery operations to restore the area begins. This gruelling process requires sufficient access to location-based information both in the field and at headquarters. Emergency personnel must be knowledgeable of the areas affected and must conduct damage assessments to ensure requirements are met.



**WES** enables officials to accurately assess priority areas by collecting geospatial data, and proceed to analyze the information for strategic decision making. Users can share vital information with other personnel in the field using **GO Mobile**, but then also integrate collected data to the **IM** for complete analysis. **WES** provides all the tools necessary to create a common operational picture and the framework for quick, accurate and informed decision making.



## About Compusult

Compusult is a privately held company incorporated in 1985 and in continuous operation for over 30 years. We are an information technology company providing its own world leading, interoperable, data search, discovery and management solutions. We also offer many other value-added products and services including custom software, systems integration and consulting. These products and services are marketed to government, business, technical and scientific sectors with great success, ensuring a well established client base. Compusult currently operates out of its head office in Mount Pearl, Newfoundland and Labrador, Canada.

The company's key contracts have primarily involved implementation of systems that provide Geospatial data warehousing, cataloging, metadata management and Web-based services for large holdings of on-line data and data products. These projects have been completed for clients, such as the National Geospatial-Intelligence Agency (NGA), NASA, NRCAN, and the U.S. Geological Survey (USGS). In each case, Compusult's Web Enterprise Suite product has played a key role in delivering complete solutions within short time frames.

Compusult has over 20 years experience in the design, development and implementation of Web-based, geospatial data management and decision support solutions including many projects deploying Web-based tools for the search, discovery, visualizing, retrieving and publishing geospatial data from GIS databases, air photos, or satellite imagery libraries.



Compusult holds GSA Schedule Contract No. GS-35F-0373P. This provides best value and facilitates acquisition of our products and services by U.S. Government departments and agencies.

To learn more about Web Enterprise Suite  
Visit our Web Site at [webenterprisesuite.com](http://webenterprisesuite.com) or  
email: [info@compusult.net](mailto:info@compusult.net)



Mount Pearl, Halifax, Ottawa, Chantilly, VA  
40 Bannister Street Mount Pearl, Newfoundland, Canada  
(709) 745-7914 Fax: (709) 745-7927

Internet: [www.compusult.net](http://www.compusult.net)

Copyright © 2016 Compusult All rights reserved.