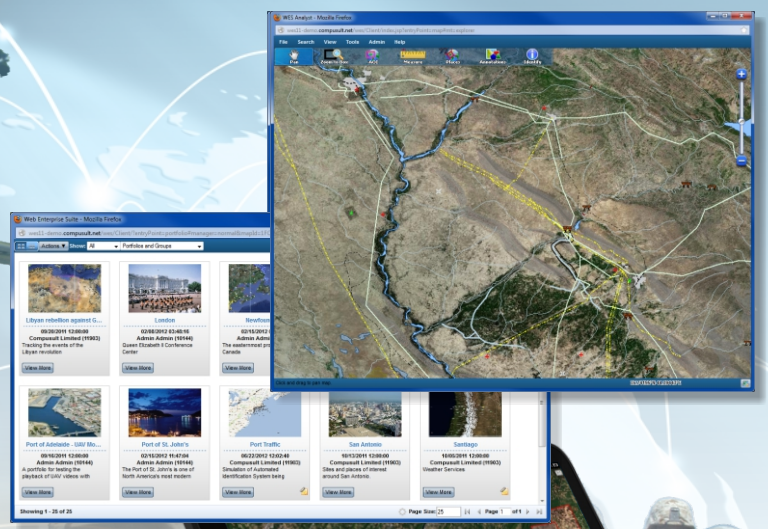




Web Enterprise suite



Defense and Intelligence

Web Enterprise Suite: Search, Discover, Visualize, Organize, Collaborate



COMPUSULT

Delivering Innovation

Situational Awareness

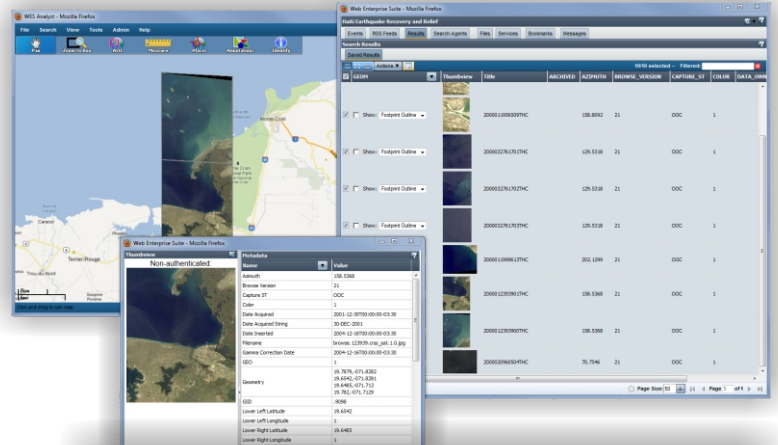
C4ISR

Homeland Security

Collaboration Through Interoperability

Web Enterprise Suite for Comprehensive C4ISR Data Management

Having the right information, at the right time, is vital for C4ISR operations. In every aspect of C4ISR data management, Compusult's **Web Enterprise Suite (WES)** and **GO Mobile** provides the platform for discovering, accessing and managing images, maps, charts, terrain, features, reports, files, videos, text documents and many other data sources. Using this suite of integrated, standards-based tools, users can now easily find utilize relevant information without switching between multiple systems.

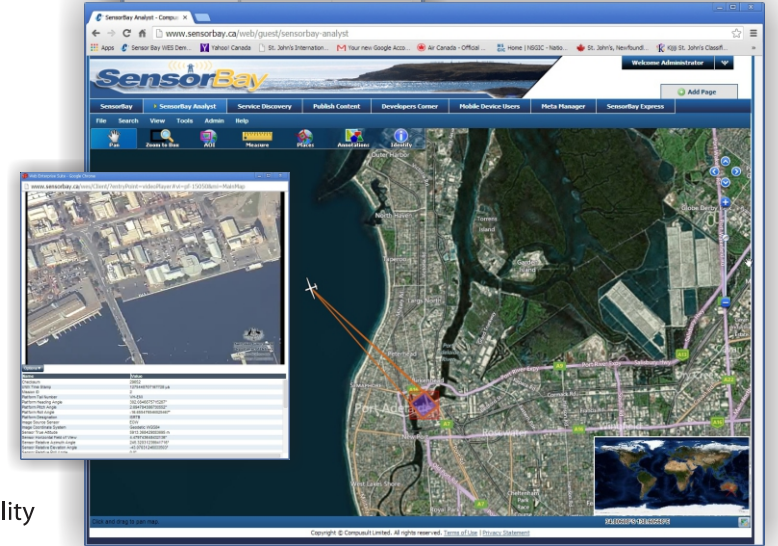


Operations Planning

Effective Planning and Analysis of Disparate Data

Efficient planning and management of military strategies and operations is necessary for those on the front line.

When a warfighter is in the field, it is vital they have the necessary information and plans in place. All sources of geospatial data should be pooled together for better planning and situational awareness. By incorporating WES into its operations, military personnel can ensure better analysis and more informed decision making. A key component to achieve this capability is the **Portfolio Manager**. It offers officials the ability to discovery, manage and share information. It opens the information flow and manages data that has been discovered and relevant to a particular mission including access to cross domain information.



The **Portfolio Manager**, in combination with other WES components such as **WES Analyst** and **GO Mobile**, supports the planning of mission specific events by allowing users to create situational views with all available data.



Complete, End-To-End Solution

Command Operations

Sharing Data for Strategic Decision Making

While it is necessary for individuals in the field to have access to geospatial information, it is equally important for officials back at command centers to have access to the same data.

Strategists gather geospatial information and analyze all sources for best results, but they also gather and collect information from warfighters in the field. This data ensures they are aware and equipped with all necessary information to make informed, tactical decisions.

WES enables officials to accurately assess priorities by collecting geospatial and other data, and proceed to analyze the information for strategic decision making. Users can share vital information with headquarters using **GO Mobile**, but then also integrate collected data to the **Portfolio Manager** for complete analysis. **WES** provides all the tools necessary to create a common operational picture and the framework for quick, accurate and informed decision making.



Field Operations

Accessing Data for Operations even in Disconnected Environments

Military persons require the right information in the field at the time of a mission or emergency to efficiently locate other personnel and allocate resources and teams. Geospatial data is necessary not only to mobilize other key officials for mission specific tactics, but also feed this information back to command centres for analysis.

If an officer is in the field, dealing with a critical mission or situation, they need access to geospatial data to make effective decisions. It is also necessary for officers to have systems in place to share findings and information with other personnel in the field, as well as back to command units. With **GO Mobile**, officers, lieutenants and captains can capture significant data and share it for decision making purposes, even in **disconnected and limited bandwidth environments**. By using **GO Mobile** in the field, users can:

- Capture and store information such as videos, pictures, documents and text
- Work **in disconnected and limited bandwidth** communications environments
- Broadcast messages to other **GO Mobile** users
- Track and locate like-authorities
- Search, manage and discover geospatial data from disparate sources
- Gather situational intelligence in real-time

This mobile app for Android and Windows devices enhances situational awareness for forces by accessing data, rapidly changing information, and alerts in a real-time environment.



Multi-Platform, Situational Awareness Solution



About Compusult

Compusult is a privately held information technology company with over 30 years of experience in software development and is a leading provider of geospatial software solutions. We also offer many other value-added products and services including custom software, systems integration and consulting. These products and services are marketed to government, business, technical and scientific sectors with great success, ensuring a well established client base. Compusult currently operates out of its head office in Mount Pearl, Newfoundland and Labrador, Canada, with branch offices in Halifax, Nova Scotia and Ottawa Ontario, Canada, as well as a U.S. subsidiary in Chantilly, Virginia.

The company's key contracts have primarily involved implementation of systems that provide Geospatial data warehousing, cataloging, metadata management and Web-based services for large holdings of on-line data and data products. Compusult has over 20 years experience in the design, development and implementation of Web-based, geospatial data management and decision support solutions including many projects deploying Web-based tools for the search, discovery, visualizing, retrieving and publishing of geospatial data from GIS databases, air photos, or satellite imagery libraries.

Compusult holds GSA Schedule Contract No. GS-35F-0373P. This provides best value and facilitates acquisition of our products and services by U.S. Government departments and agencies.



To learn more about Web Enterprise Suite, visit our Website at webenterprisesuite.com or email: info@compusult.net

COMPUSULT
compusult.net

Mount Pearl, Halifax, Ottawa, Chantilly, VA
40 Bannister Street, Mount Pearl, Newfoundland, Canada
Phone: (709) 745-7914 Fax: (709) 745-7927
Web: www.compusult.net
Copyright © Compusult All Rights Reserved