

# Version 5.0 META<sup>®</sup> MANAGER

Enabling Interoperability

## Exposing Data Through Standards

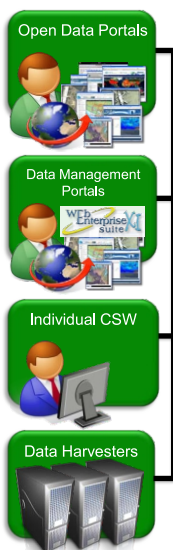
Meta Manager easily exposes metadata from both **structured** and **unstructured** data via the OGC CSW standard. This provides interoperability for presentation and discovery while utilizing existing data definitions.

*Meta Manager is a powerful metadata management solution, implemented using open standards and best practices, that provides the ability to organize data assets internally and expose these assets to internal and external sources and users.*

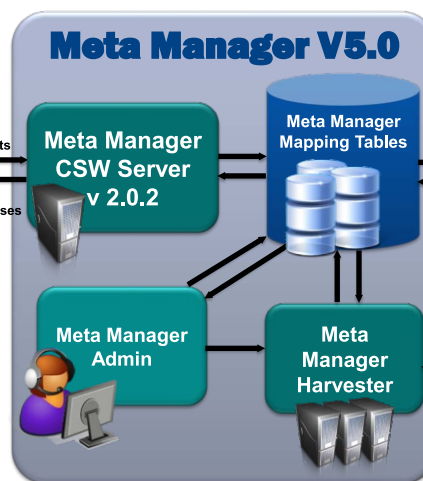
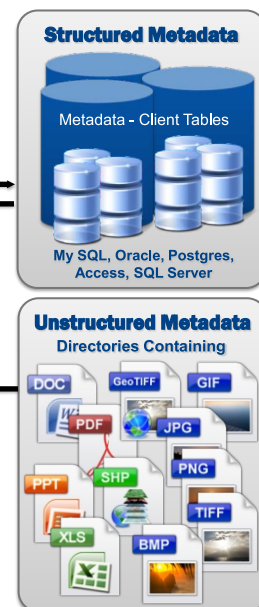
### Overview

Meta Manager Version 5.0 provides organizations with the ability to quickly and easily expose their data holdings and data assets via Web-based interfaces. The Web service has been implemented using the Open Geospatial Consortium (OGC) standard, **Catalog Services for the Web (CSW)**. It is a metadata management solution that provides a complete solution for creating and defining new and/or mapping existing geospatial metadata definitions and geospatial datasets according to national and international standards. These standards include ISO 19115-2, North American Profile (NAP), Department of Defense Metadata Standard (DDMS) and Dublin Core. If a new or modified existing standard is required, these can be easily added.

### Data Consumers



### Data Sources



### Benefits

- A low cost yet powerful solution for mapping and indexing data assets within an organization.
- Can be configured as a service registry for maintaining metadata about service end-points that access the data assets.
- Meta Manager is intuitive, easy to install and easy to use.

### Features

- Easily integrates with existing relational databases such as Oracle, Postgres, MySQL, Microsoft SQL Server and Access, without requiring modifications or changes to the originating data structures.

- Provides data administrators the ability to expose relational database content using one or more of the standard metadata specifications included within the application. This is accomplished by mapping the database columns to the metadata elements. Attributes in the database can be translated and augmented as necessary.
- Provides data administrators with the ability to fill-in gaps in the database for the metadata standard. For example, contact information may be entered once and is then retrieved along with each metadata record in the database.
- Enhanced SQL syntax checking and verification.
- Includes a metadata harvesting facility for performing automated metadata population from unstructured data (KML, MrSID, GeoTIF, PDF, SHP, Microsoft documents (Word/PowerPoint/Excel), PNG, GIF, BMP, TIF, JPG, JPE, JPEG, JFIF, CADRG, etc.) distributed throughout the organization's file systems.

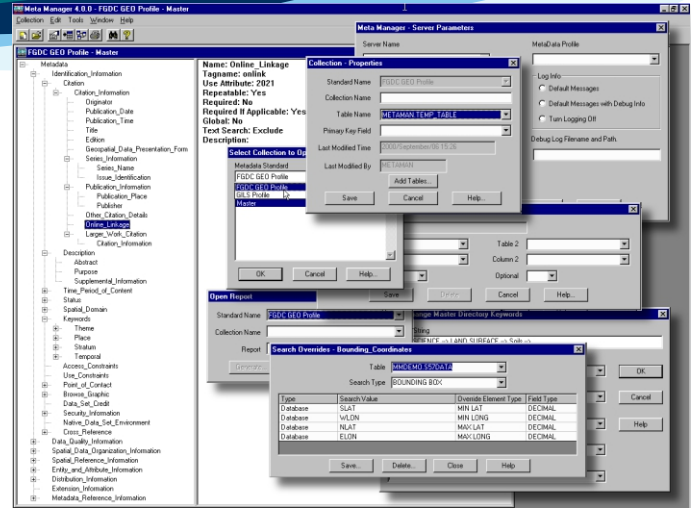
# Version 5.0 META<sup>®</sup> MANAGER

Enabling Interoperability

Providing cost-effective solutions for implementing metadata

## More Features

- Meta Manager will keyword index all files that are harvested by the Meta Manager harvester.
- The Meta Manager Administrative client is installed on the data administrators desktop and provides all functions for the management of the metadata included within the system and has modules for browsing and updating metadata.
- Meta Manager also has a Web-based JSP form for searching and discovering metadata contained within the system. These JSP pages may be modified by an administrator to suit an organization's discovery needs and look-and-feel requirements.
- Meta Manager generates file transfer options in the returned ISO metadata search results so that files and assets can be downloaded directly by users.
- Style sheets are included with the system to style metadata result sets according to the metadata standard. These can also be modified by administrators.
- The Meta Manager server is built upon the OGC CSW v2.0.2 specification. Consequently, other clearing houses can search your data holdings "out-of-the-box".
- The Meta Manager server is a high performance server that will respond to queries instantly.
- Meta Manager is OGC-compliant and certified.



## Meta Manager Relational Database Platforms

Meta Manager has support for the following relational database platforms: Oracle, MS SQL Server, My SQL, Postgres and Microsoft Access.

## Supported Operating Systems

Meta Manager Server software supports the following operating systems:

- MS Windows, and,
- Linux.

The Meta Manager Administrative Interface may be installed on any platform running Microsoft Windows.

## Optional Components

### WES Catalog

WES Catalog is a comprehensive, standards based, catalog/service registry management application providing discovery, publishing, access and maintenance of web-based service metadata. WES Catalog has been implemented using the OGC Catalog Services for the Web (CSW v2.0.2) specification and supports distributed searching of remote and local metadata catalog systems like Meta Manager. The OGC CSW service registry specification is based upon the eXML service registry standard that has been extended to support geospatial services.

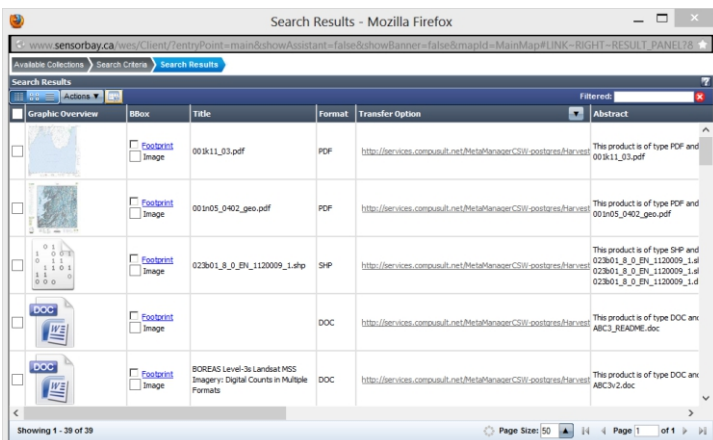
### Meta Manager is a component of:



CompuSult's Web Enterprise Suite (WES); a suite of SOA-based applications and toolkits that support Web mapping, sensor integration, information cataloging, discovery, retrieval and delivery services. WES is used by many organizations to support situational awareness and real-time operations.

Licensing and pricing information for Meta Manager and various options are available upon request.

Visit our Web Site at  
**ExposeYourData.com** and  
Download Meta Manager 5.0



Mount Pearl, Halifax, Ottawa, Chantilly, VA  
40 Bannister Street, Mount Pearl, Newfoundland, Canada  
Phone: (709) 745-7914 Fax: (709) 745-7927  
Web: [www.compuSult.net](http://www.compuSult.net)  
Copyright © CompuSult All Rights Reserved