



Mobile Solution for Situational Intelligence

Mobile Access to Critical Data and Assets
**Real-time Reconnaissance, Data Collection,
Reporting and Updating**
Operates in Disconnected Environments

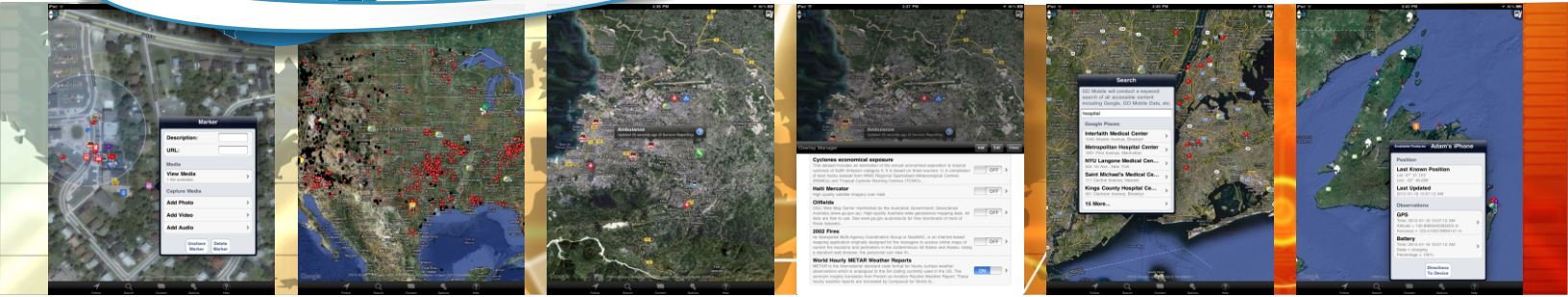
GO Mobile

GO Mobile is a mobile app for devices such as the iPhone, iPad, Android phones and Android tablets to easily discover and access geospatial content and other data and services through secure wireless communications or even in **disconnected** environments. This app provides superior geospatial/mapping awareness and enables the sharing of information and content among other mobile users.

GO Mobile Features

- Gather **situational intelligence** in real-time.
- **Search, manage and discover** geospatial data and services from disparate sources.
- **Track and locate** like-authorities (Military Personnel, Police, Fire Fighters and Emergency Response).
- View other **GO Mobile** users on mapping applications such as Google Maps or the provided Web Mapping Service (WMS) in a defined area of interest.
- **Capture and store** information (videos, pictures, documents, text) for sharing among members.
- **Pre-load** maps, imagery and service data for **use in disconnected operations** using the GO Mobile **GeoPackaging Service**. Files remain encrypted once loaded to ensure secrecy and new data collected in the field will be automatically updated and shared once in range of connection services.
- Enhance **situational awareness** by accessing data, rapidly changing information and alerts in a real-time environment.
- Track historical events.
- Create and access **incident** or **events** for improved organization and access, leading to improved decision making.
- Broadcast messages to other **GO Mobile** users with enhanced **messaging capability**.
- Provide **overlay of information** (weather, secure databases and other sensor data).

Your mobile device, phone or tablet acts as a sensor platform - aggregating data from built-in sensors such as GPS, compass, camera, temperature and microphone.



Geospatial Data Interaction - Anytime, Anywhere

The CompuSult **GO Mobile** app is a standards-based component of **Web Enterprise Suite (WES)** supporting OGC standards, Google mapping and the fusion of data from multiple sources into a single, integrated environment. Officials in domains such as Homeland Security can now search, discover, access and share geospatial data from their mobile devices. While in the field, **even in disconnected or limited bandwidth environments**, Military and Emergency Response personnel can use **GO Mobile** and its GeoPackaging Services for sharing location-based information and content among associated officials and communities of interest.

Encompassing several valuable features, it not only provides users with the option of sharing information with others through the mobile device, but **GO Mobile** also enables officials to use their device of choice for Situational Awareness and Common Operating Picture functions. An administrator can set up a dedicated incident or event and user group based on a particular event or disaster with the Area of Interest (AOI) focused on the actual area of concern. Data can be stored within the event to allow users to manage and organize information for enhanced decision making. In addition, members are aware of other users locations, can track historical events and can communicate through media sharing.



With **GO Mobile**, a user's Android or Windows device can become a "sensor", capturing and sharing data such as the device location, pictures, videos, audio and other situational information such as conditions and events.

Web browser users can use other WES components to visualize and combine **GO Mobile** information and content with other information and content from remote systems.

GO Mobile supports organizations that require immediate, secure and reliable access to geospatial information for decision making purposes.

About CompuSult

CompuSult is a privately held information technology company with over 30 years of experience in software development and is a leading provider of geospatial software solutions. We also offer many other value-added products and services including custom software, systems integration and consulting. These products and services are marketed to government, business, technical and scientific sectors with great success, ensuring a well established client base. CompuSult currently operates out of its head office in Mount Pearl, Newfoundland and Labrador, Canada, with branch offices in Halifax, Nova Scotia and Ottawa Ontario, Canada, as well as a U.S. subsidiary in Chantilly, Virginia.

The company's key contracts have primarily involved implementation of systems that provide Geospatial data warehousing, cataloging, metadata management and Web-based services for large holdings of on-line data and data products. CompuSult has over 20 years experience in the design, development and implementation of Web-based geospatial data management and decision support solutions including many projects deploying Web-based tools for the search, discovery, visualizing, retrieving and publishing of geospatial data from GIS databases, air photos or satellite imagery libraries.



CompuSult holds GSA Schedule Contract No. GS-35F-0373P. This provides best value and facilitates acquisition of our products and services

To learn more about Web Enterprise Suite, Visit our Website at webenterprisesuite.com or email: info@compusult.net



Mount Pearl, Halifax, Ottawa, Chantilly, VA
40 Bannister Street, Mount Pearl, Newfoundland, Canada
Phone: (709) 745-7914 Fax: (709) 745-7927
Web: www.compusult.net

Copyright © CompuSult All Rights Reserved